



G. Marconi Airport



Catchment Area

A crossroads for national and international business and freight traffic, Bologna is situated on Italy's major road and railway connections. Only 6 kms from the city's historical centre and the Central Station, with a rapid public service to connect them, it is one of Italy's top intercontinental airports offering routes to more than 100 destinations, 79% of which are international. Thanks to its geographical position, the catchment area of the Guglielmo Marconi city airport covers 19% of Italy's population: a total of 11 million inhabitants. People in transit through Bologna make individually around 5.4 journeys each year, 70% of which departing from Bologna. In a wider perspective, the catchment area includes up to 33% of the population, nearly 20 million inhabitants.

BolognaSystem



DISTANCE FROM CITY CENTRE AND CENTRAL RAILWAY STATION	6 km
TRAVEL TIME FROM CITY CENTRE	15 minutes
TOTAL PASSENGERS IN 2009	4,774,700
RUNWAY LENGTH	2,800 m
CARPARK SURFACE AREA	125,000 sqm
PARKING SPACES	5,000
NUMBER OF GATES	22
CHECK-IN DESKS	74
SHOPPING AREA	4,000 sqm

Key developments: from a City Airport to an Airport City

Over the coming years, the G. Marconi Airport will undergo important changes that will greatly enhance the infrastructure in terms of passenger traffic and freight handling, as well as the surrounding areas and transportation to and from the city centre and other important business districts. The city development plan has opened up the possibility of developing new functions using free sites around the airport.

In addition to the new possibilities offered by the city development plans and thanks to its industrial plan, G. Marconi Airport has pinpointed new strategic levers for its development over the next few years. These include plans to **upgrade the infrastructure**, renovate the Passenger Terminal, build a new departures hall, extend aircraft aprons and car parks and build the station for the People Mover, the raised monorail that will connect the airport directly to the new Central Station on the High Speed rail line from 2013. The first phase of the plan, which is due to be implemented over the next three to five years, is aimed at improving the environment of the existing terminal in terms of greater comfort, increasing the standard of services on offer and streamlining operations. This will be followed by a second phase aimed at building a completely new terminal. G. Marconi Airport aims to increase the volume of traffic to 10 million passengers per year, consolidating business traffic and greatly increasing the volume of low-cost traffic.



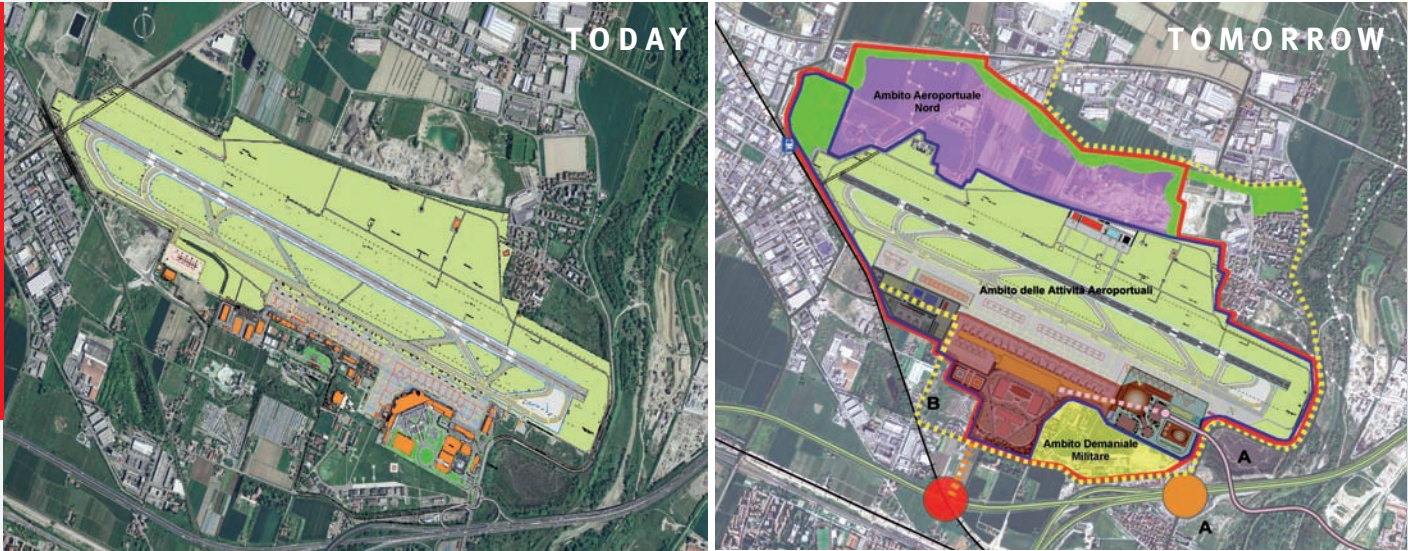


G. Marconi Airport

Real Estate Development

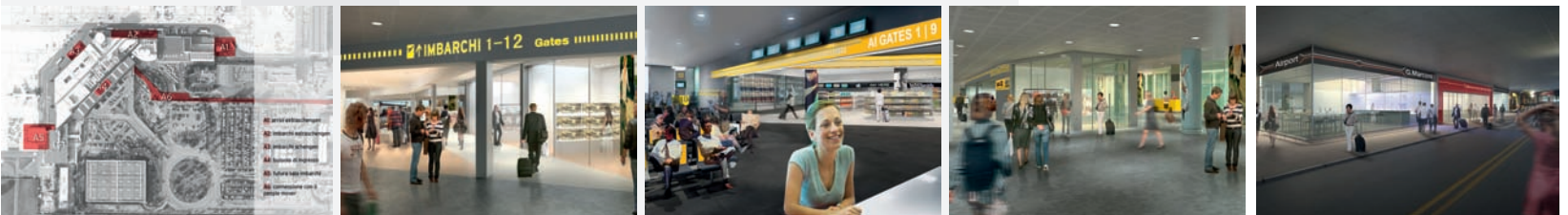
Upgrading the airport goes hand-in-hand with opportunities to develop new non-aviation activities through partnerships and joint projects with private investors for new integrative and complementary functions related to administration, conferences, hospitality, shopping, airport logistics and urban recreation. The real estate development project for the next few years, which involves hotel complex, administration headquarters as well as shopping and recreation facilities, will help to strengthen Bologna Airport's driving role in developing an exemplary functional pole. No longer just a point of arrival or departure, the airport takes on an increasingly important role as a meeting place and strategic lever for economic development of the local area.

BolognaSystem



Passenger Terminal Restyling: a new concept for the shopping area

Plans to further develop the airport's vibrant shopping area, which already features some of the most important local brands and products, such as Ducati, Ferrari, La Perla, Mandarina Duck, Furla and Piquadro, will enhance the airport's prestige and international visibility while helping to support and promote local traditions of manufacturing excellence around the world. In particular, following the example of the most successful international players, a wide walk-through area will be created based on the logic of airport expansion which facilitates the flow between operational areas and shopping areas allowing passengers to make the most of their time by leading them through the shops on their way to the gate.



The Guglielmo Marconi Airport

As one of Italy's major intercontinental airports, with over 4 million passengers per year, the Guglielmo Marconi receives flights of up to 5,000 nautical miles' radius and boasts cutting edge safety and environmental protection technology. With swift connections to the main road arteries and the city's services, the airport is the point of departure for flights to all major Italian, European, Mediterranean and Central American destinations.

Furthermore, with a bank, a post office, a Vip Lounge, a financial services centre, a travel agency and car rental facilities, the Marconi caters for all the demands of travel with the highest standards of service. The airport also provides 5,000 parking spaces with an efficient vehicle safety and maintenance service (Car Valet).

