



TAVERNELLE

Industrial area



Location



Sala Bolognese



Via Ducati e
Lamborghini

Accessibility

The area is located in the supra-municipal production area of Tavernelle, about 6.5 km from the Borgo Panigale A1 motorway exit and near the SP 658 Persicetana axis.

The Osteria Nuova railway station is less than 2 km away while the Bologna Guglielmo Marconi airport is less than 10 km away.

Position



6 km

Airport



2 km

Train station



7 km

Highway



0.3 km

Bus/tram



15 km

Terminal
(interporto)



102 km

Ravenna
freight port



21 km

Bologna

218 km

Milan



100 km

Ravenna

385 km

Rome

128 km

Florence

154 km

Venice

Strengths

- Proximity to Osteria Nuova railway station.
- Hub of the Motor valley area.
- Possible subdivision into 8 plots.

Information



Land area:

185,000 sq.m

Buildable area:

71,250 sq.m

Proprietary:

Private

Time for obtaining the building permits:

6 months - 1 year

Spatial planning tools:

The procedure for modifying the Municipal Operational Plan with a contextual Implementation Plan is currently underway.



Italy



Bologna
Metropolitan City
Area

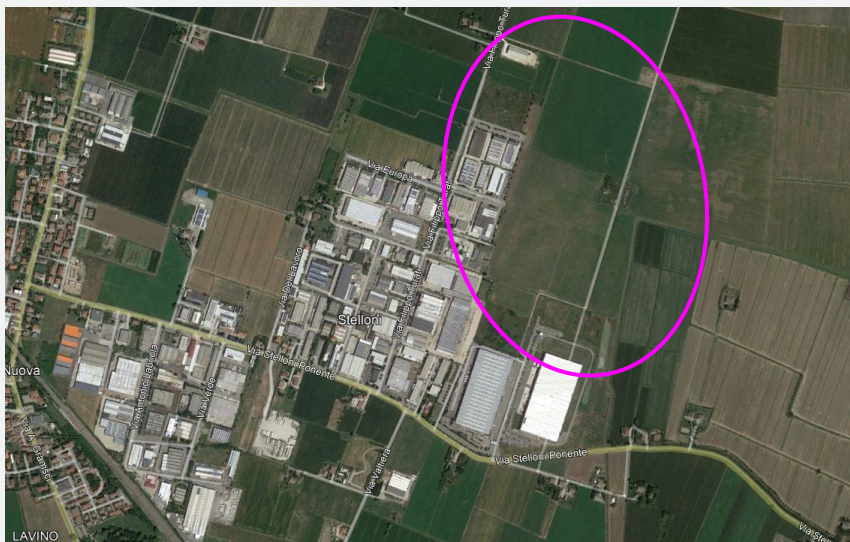
Revision date

03/04/2022

Description

The production area of Tavernelle already hosts more than 200 companies, many of which belong to the manufacturing sector, among which a leading company in the manufacture of gears for transmission organs stands out.

The proposed Zone A is an expansion area, now destined for agriculture, which can be divided into 8 lots. The area is flat and has no constraints. It can accommodate production functions (any dimension) and logistics settlement not exceeding 10,000 square meters of floor area.

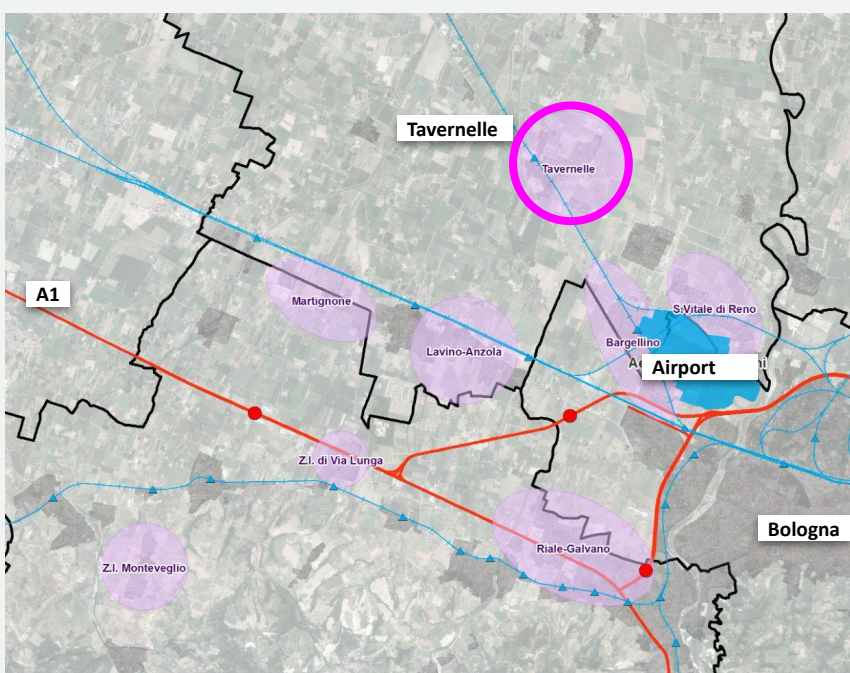


Localization on Google map



Masterplan

- Production hubs
- Railway network
- Railway stations
- Motorways
- Motorway exits



Location of the industrial area



For information:

Phone: + 39 051 6598541 / + 39 051 6599618
email: investinbologna@cittametropolitana.bo.it

www.investinbologna.it